

Friendly Virtual Reminders

- **Please note that this session is being recorded and the meeting will begin shortly**
- **Kindly rename yourselves on Zoom to your name and Island or Affiliation**
- **Mute your microphone during the program**
- **We encourage use of video during the session**
- **Use chat box liberally for discussion, comments, and resource sharing, and please direct your general comments to “Everyone”**
- **We follow the Chatham House Rule to support trust-based forum**

**For Zoom/ technical related questions, message “Laura Kam - Local2030 Islands Network” directly in the chat box.*

PARTICIPANT NOTE

Welcome! Please rename yourself with your name + affiliation



Data for Climate Resilience Community of Practice



The Data for Climate Resilience Community of Practice is aimed to provide peer-to-peer learning opportunities, targeted technical assistance for island-led initiatives, foster collaboration with various experts to develop sustainable solutions and achieve island resilience goals.

PARTICIPANT NOTE

Welcome! Please rename yourself with your name + affiliation

Kate Brown
Executive Director
Global Island Partnership



PARTICIPANT NOTE

Where are you calling in from today? Please add to chat box

Agenda

I. Welcome and Introductions

- *Kate Brown, Executive Director, Global Island Partnership*

II. Local2030 Islands Network Overview and Principles

- *Celeste Connors, CEO, Hawai'i Local2030 Hub*
- *Shella Biallas, Adaptation Lead, Office of Global Change, U.S. Department of State*

III. Communities of Practice Model

- *Mike Callahan, Applied Engineering Team Manager, NREL*

IV. Partnerships to Support Local and Community Driven Data

- *Kaimana Bingham, Sustainability Dashboard & Partnerships Manager, Hawai'i Local2030 Hub*
- *Carmelle Terborgh, Lead Account Manager, Esri*

V. Guest Speaker

- *Roger Pulwarty, Senior Scientist, Physical Sciences Laboratory, NOAA*

VI. Facilitated Discussion in Breakout Groups

VII. Plenary Session

VIII. Closing & Next Steps



Celeste Connors
CEO
Hawai'i Local2030 Hub

Core Principles of the Local2030 Islands Network



Strengthen long-term political leadership on sustainable development and climate resilience



Scale up public-private partnerships that support diverse stakeholders in integrating sustainability priorities into policy and planning



Measure SDG progress through tracking and reporting on locally and culturally informed indicators



Implement concrete initiatives that build island resilience and circular economy at the water energy-food nexus



Shella Biallas

Adaptation Lead

Office of Global Change

U.S. Department of State

Michael Callahan

Applied Engineering Team Manager
National Renewable Energy Laboratory





What is a Community of Practice?

A Community of Practice (CoP) is an interactive and member-driven network of people who come together to learn and support individual and group goals.

The Local2030 Islands Network and partner organizations are developing CoPs to enable islands to learn from one another with the support of island experts.



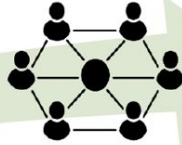
Community of Practice Model



Country Deep Dives



CoP Group Learning



Regional & global
knowledge dissemination

1

Members identify annual priority topics for the CoP aligned with locally developed SDG goals

2

Map stakeholders and initiatives – concept note developed and shared to recruit other members

3

Jointly develop annual work program with goals, activities, planned outputs, and partnerships.



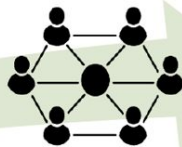
Community of Practice Model



Country Deep Dives



CoP Group Learning



Regional & global
knowledge dissemination

4

Delivery of learning and technical assistance

5

Recruitment of new members and partners

6

Ongoing monitoring on progress and added value –
adjustment of work plan activities as needed



Courtesy of Blue Zones Project

Attributes of Successful Communities of Practice

- **Convene practitioners** with strong shared interest on specific topics
- **Bottom up, demand driven and dynamic** to meet diverse member needs
- **Multi-stakeholder group** for rich and in-depth exchange
- **Couple peer learning and technical support** to early movers with continuous feedback
- **Foster country and regional SDG champions** and regional/global cooperation
- **Safe and apolitical space** for peer learning, exchange of best practices and innovation
- **Enable cross-country collaboration** and resource sharing



 LOCAL2030
ISLANDS
NETWORK

Examples of Activities



**Peer learning,
training programs,
and study tours**



**Expert advisory
support to early
movers**



**Cross-country collaboration and
high-ambition coalitions**



**Cooperation on proposals
for expanded regional
projects**



**Hackathons and other innovative
learning mechanisms**



**Matchmaking to financial
institutions and investment
facilities**

Communities of Practice in Action

Case Study Example 1

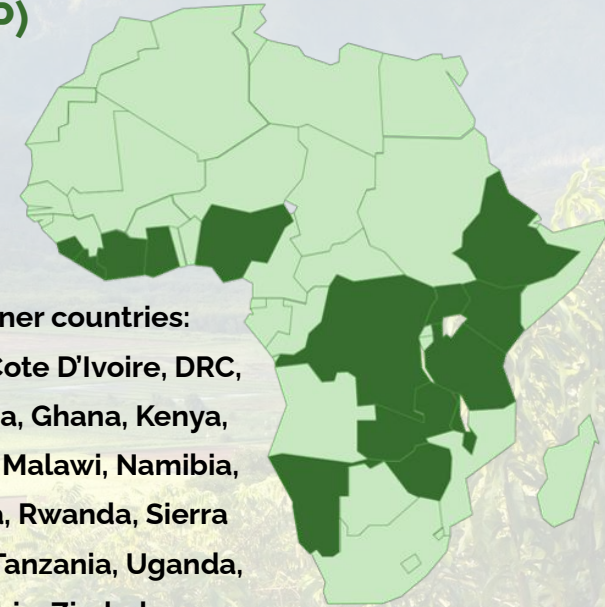
AfLP's Africa Minigrids Community of Practice (AMG CoP)

Brings together practitioners (public, private, academia, etc.) from 18+ member countries to provide training, tools, lesson sharing, peer-exchanges and in-depth technical assistance

2021-22 guiding theme of CoPs: developing long-term visions for low-emission energy-agriculture systems and their application to inform NDC planning and implementation

Trusted network for open and honest peer dialogue and rapid validation and information sharing with peers in other countries. Engaged membership (lively WhatsApp thread) and known partners creates open space to share views, opinions, lessons, successes and failure

All priorities driven by members via annual work planning and bilateral validation discussions



Partner countries:
Benin, Cote D'Ivoire, DRC,
Ethiopia, Ghana, Kenya,
Liberia, Malawi, Namibia,
Nigeria, Rwanda, Sierra
Leone, Tanzania, Uganda,
Zambia, Zimbabwe

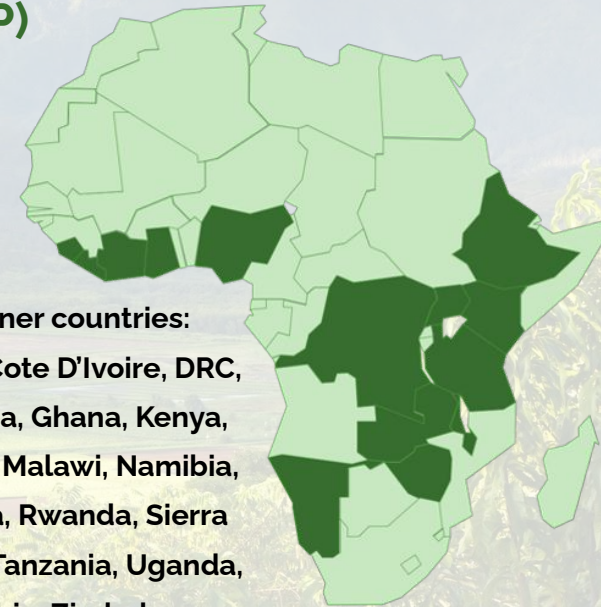
Communities of Practice in Action

Case Study Example 1

AfLP's Africa Minigrids Community of Practice (AMG CoP)

Recent Successful Activities:

- In-depth peer-to-peer exchanges on minigrid development frameworks, e.g. public vs. private-sector led approaches (exchanges including Ghana, Nigeria, Ethiopia)
- Public-private finance dialogue and MG policy and regulatory crash courses for new countries, in partnership with Africa Minigrid Developers Association and others, on attracting private finance to minigrid sector
- Remote workshop series on member-driven priorities including MG finance, MG co-benefits, long-term planning, productive uses of energy (PUE) for minigrids
- Planning to launch spinoff CoP focused on energy-agriculture nexus and links to broader NDC planning and implementation, as identified by priorities as members



Partner countries:
Benin, Cote D'Ivoire, DRC,
Ethiopia, Ghana, Kenya,
Liberia, Malawi, Namibia,
Nigeria, Rwanda, Sierra
Leone, Tanzania, Uganda,
Zambia, Zimbabwe

Communities of Practice in Action

Case Study Example 2

Transport Communities of Practice in LAC and Asia

LAC – Electric Mobility CoP

Partner countries: Uruguay, Colombia, Mexico, Argentina, Peru, Ecuador, Panama, Chile, Honduras, El Salvador, Bolivia

Peer Learning and capacity building "virtual" and in-person e-mobility workshops:

"Integrated Sustainable Mobility for Urban Cities"

- Equity and justice are key aspects to keep in focus in urban electrification projects
- The greatest planning and design complexity lies not in the vehicle technology or the charging infrastructure, but in the communication between the two.

Costa Rica: Curridabat's Local Mobility Transition Plan designed to help the city achieve its sustainable transportation goals that are affordable, safe, efficient, non-polluting and available to all.

Mexico: Framework for Mexicali's Electric Mobility Strategy, including data-driven solutions to inform strategies and regulatory framework for the city's transition to electric vehicles.

Colombia: Guidance for the development of Bogota's electric mobility policy roadmap and guidance for transitioning the city's motor-cycle fleet to electric

Communities of Practice in Action

Case Study Example 2

Transport Communities of Practice in LAC and Asia

ASIA – Clean Mobility CoP and High Ambition Leadership Group

Leadership Group (2021):

Technical leaders from 8 countries have joined this group. To date, three countries have received support for technical challenges and long-term planning to progress towards net-zero transport systems.

Sri Lanka: Developed a framework for a national electric mobility policy

Bhutan: Developed a Pre-Bus Rapid Transit (BRT) system for Thimphu city to help plan the city's public transportation



Kaimana Bingham

Sustainability Dashboard & Partnerships Manager
Hawai'i Local2030 Hub

Hawai'i Green Growth

Hawai'i Green Growth (HGG) members and supporters include:



Sustainable Development Goals

The Sustainable Development Goals (SDGs), also known as the Global Goals, were adopted by all United Nations Member States in 2015 as a universal call to action to end poverty, protect the planet and ensure that all people enjoy peace and prosperity by 2030. Hub sites and initiatives help to convey the adoption and status of the goals across all levels of government, and bring together collaborators across the community.



UN Stats Open SDG Data Hub

This open data website promotes the exploration, analysis, and use of authoritative SDG data sources for..



The UAE SDG Data Hub

The UAE SDG Data Hub sheds light on the UAE's relentless efforts towards achieving UN's 2030 goal...



Aloha Challenge

The Aloha+ Challenge is Hawai'i's local framework to achieve the SDGs with a Dashboard to track progres...



Ireland's Hub for Sustainable Development..

This is Ireland's collaboration platform for reporting on progress towards the SDGs and sharing...



Aloha+ Challenge Dashboard

- Tracks Hawai'i's local contribution to all 17 SDGs with 6 priority areas, 37* targets & 200+ community-based indicators developed over 6 years of convening public and private stakeholders
- The dashboard provides accountability & informs decision-making as part of an ongoing stakeholder process

THE GLOBAL GOALS
For Sustainable Development



CLEAN ENERGY



WASTE REDUCTION



LOCAL FOOD



SMART SUSTAINABLE COMMUNITIES



NATURAL RESOURCE MANAGEMENT



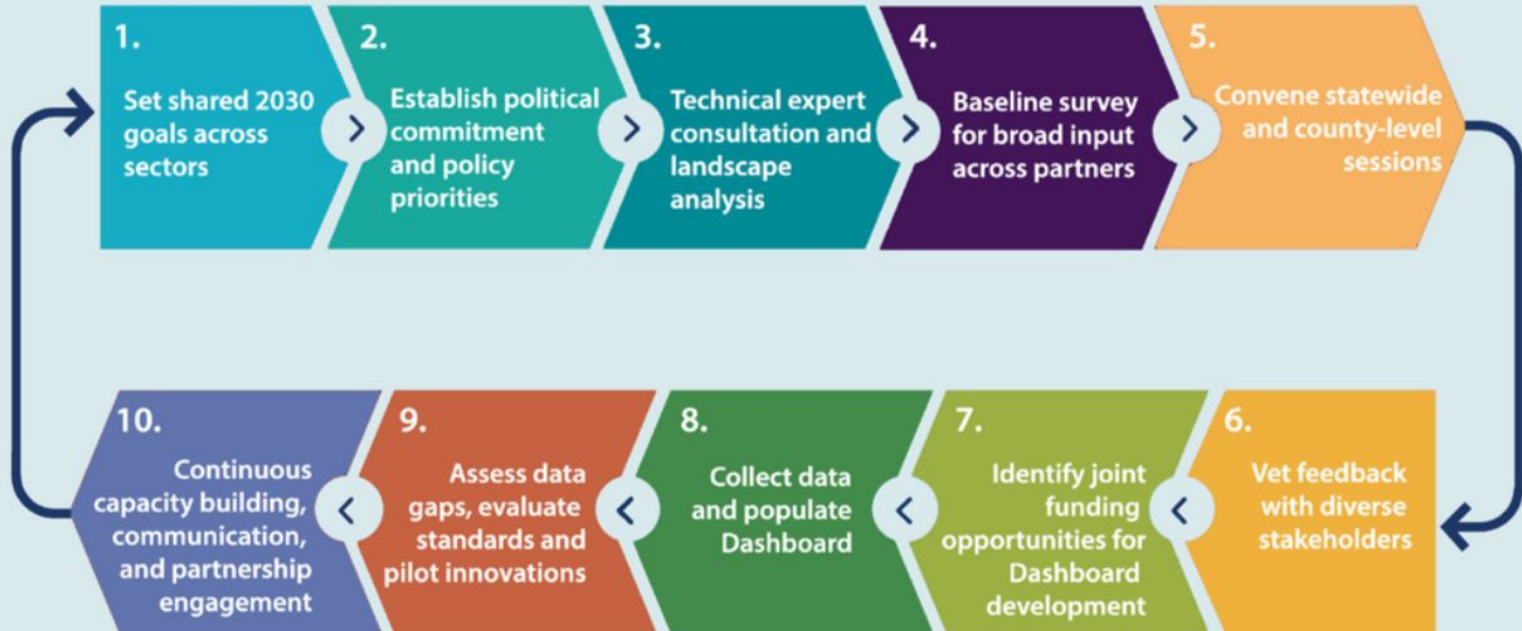
GREEN WORKFORCE & EDUCATION



Measure What Matters

Stakeholder-driven development of local metrics and indicators

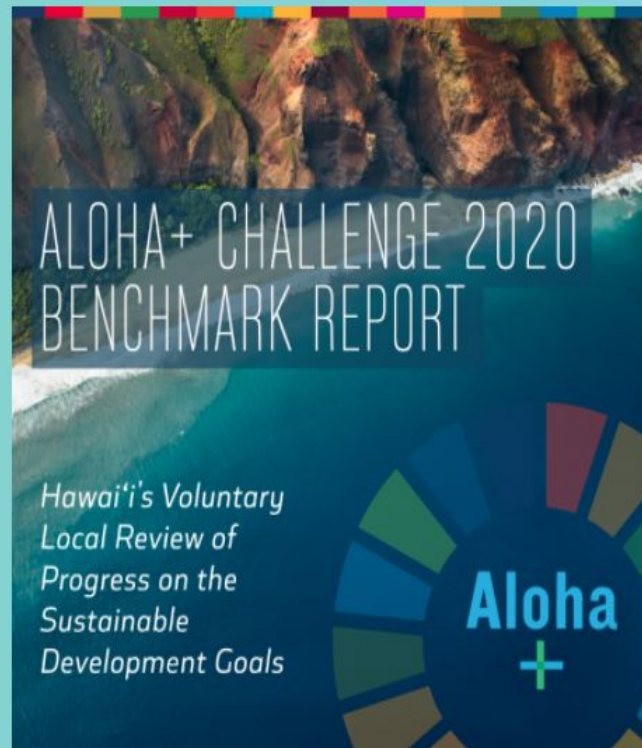
Short-term consensus building for long-term goals connecting governance, technology and community



Aloha+ Challenge 2020 Benchmark Report: Hawai'i's Voluntary Local Review Of Progress on the Sustainable Development Goals

Hawai'i's first statewide Voluntary Local Review assesses progress to date and provides 2020 benchmark data to inform decision-making, including on economic recovery, through the Aloha+ Challenge - Hawai'i's framework to achieve the UN Sustainable Development Goals

[Download Benchmark Report](#)





Carmelle Terborgh, Ph.D.

Lead Account Manager

Nonprofit and Global Organizations

Esri



SDG
DATA
ALLIANCE

THE PARTNERS



PUBLIC
FOUNDATION



SDG Data Alliance

Based on the foundational principle of reducing inequalities of all kinds, the W.K. Kellogg Foundation, Esri, PVBLIC Foundation, the United Nations Global Geospatial Information Management Section in the Statistics Division, Department of Economic and Social Affairs (DESA), joined forces in 2021 to form **the SDG Data Alliance**.

Using the power of **purpose-driven collaboration** and leading GIS technology, this influential group of partners **will accelerate achievement of the SDGs** by creating 20 SDG Data Hubs across developing countries in Africa, Asia and the Pacific and Latin America and the Caribbean.





UNITED NATIONS
DEPARTMENT OF ECONOMIC
AND SOCIAL AFFAIRS



W.K.
KELLOGG
FOUNDATION®



UN OFFICE FOR
PARTNERSHIPS

PUBLIC
FOUNDATION



UN-GGIM
UNITED NATIONS
COMMITTEE OF EXPERTS ON
GLOBAL GEOSPATIAL
INFORMATION MANAGEMENT



United Nations | DESA
Statistics



A Multi-Stakeholder Partnership

Objectives and Outcomes

- **Leverage and strengthen** the in-country expertise from geospatial experts within and across governmental agencies and organizations leveraging the data hubs
- **Address national and global reporting** requirements to report on the SDGs - with specific focus on SDG 10
- **Accelerate achievement of the SDGs** by accurately identifying areas for focus and investment




The **SDG DATA ALLIANCE** began country-level engagement with an **initial group of 11 countries** and will shortly engage **another 7 countries**

30 candidate countries

Africa	Asia and the Pacific	Latin America and the Caribbean
1. Burkina Faso	16. Fiji	21. Chile
2. Cameroon	17. Indonesia	22. Colombia
3. Comoros	18. Nepal	23. Cuba
4. Congo DRC	19. Philippines	24. Dominican Republic
5. Eswatini	20. Tonga	25. Ecuador
6. Ethiopia		26. El Salvador
7. Kenya		27. Guatemala
8. Madagascar		28. Honduras
9. Morocco		29. Panama
10. Mozambique		30. Saint Lucia
11. Niger		
12. Rwanda		
13. Senegal		
14. South Africa		
15. Tunisia		

Initial Group of 11 Countries



Burkina Faso
Cameroon
Chile
Eswatini
Ethiopia
Mozambique
Rwanda
Senegal
South Africa
Tonga
Tunisia



for more information:
alliance.sdg.org



SDG
DATA
ALLIANCE





- SDG Data Alliance Candidate Island Nations (8)
 - Integrated Geospatial Information Framework implementation plan
 - SDG Data Hub – federated with UN Open SDG Data Hub and Local2030 Islands Network SDG Data Hub
- Island Nations that are IDA Countries (21)
 - SDG Data Hub Site within a Local2030 Islands Network SDG Data Hub
- Resources from Esri
 - SDG Grant for IDA countries
 - GIS Curriculum for SDGs
 - SDG Data Hub Template – which can incorporate dashboards & open data
 - ArcGIS Living Atlas content (imagery, landcover, world population, etc.)



Roger Pulwarty

Senior Scientist

Physical Sciences Laboratory

NOAA

Interactive Sessions: Thematic Areas for Community of Practice

Guiding Objectives:

- Identify **2-3 priority focus topics** for the Data for Climate Resilience Community of Practice
- Insight on **challenges and opportunities** that can inform Community of Practice action

Format: One 55-minute breakout session followed by a Closing Plenary



Google Jam - Google Jambo... X

jamboard.google.com/d/72xt8FjEMD56UUwz-y7vy3Sx_PJengPKWUbKot3c2st/viewer?l=8

Google Jam

9/18

Share

Set background Clear frame

Open on a Jamboard

Jamboard Tips

Create

View a dashboard of all your Jamboards @ jamboard.google.com

Edit

Use the Undo feature when drawing to quick erase mistakes

Use the cut/paste to bring objects quickly to the front layer

Paste images directly onto the Jamboard

Use the Copy/Paste to duplicate objects on the frame

Share

Share a copy of your Jamboard. At the end of the URL, change it from "Edit" to "Copy"



Closing Plenary

Key takeaways from the breakout sessions and Community of Practice next steps.



**Data for Climate Resilience
Community of Practice**



Thank you!

**For more information visit
www.islands2030.org or
contact info@islands2030.org**

January 27, 2022

