

Data for Climate Resilience Community of Practice



Friendly Virtual Reminders

- Please note that this session is being recorded and the meeting will begin shortly
- Kindly rename yourselves on Zoom to your name and Island or Affiliation
- Mute your microphone during the program
- We encourage use of video during the session
- Use chat box liberally for discussion, comments, and resource sharing, and please direct your general comments to “Everyone”
- We follow the Chatham House Rule to support trust-based forum

**For Zoom/ technical related questions, message “Laura Kam - Local2030 Islands Network” directly in the chat box.*

PARTICIPANT NOTE

Welcome! Please rename yourself with your name + affiliation



Data for Climate Resilience Community of Practice



The Data for Climate Resilience Community of Practice is aimed to provide peer-to-peer learning opportunities, targeted technical assistance for island-led initiatives, foster collaboration with various experts to develop sustainable solutions and achieve island resilience goals.

PARTICIPANT NOTE

Welcome! Please rename yourself with your name + affiliation



Kate Brown

Executive Director

Global Island Partnership

PARTICIPANT NOTE

Where are you calling in from today? Please add to chat box

Agenda

I. Welcome and Introductions

- *Kate Brown, Executive Director, Global Island Partnership*

II. Local2030 Islands Network Overview and Principles

- *Celeste Connors, CEO, Hawai'i Local2030 Hub*
- *Trigg Talley, Senior Director, Office of the Special Presidential Envoy for Climate*

III. Communities of Practice Model

- *Ron Benioff, International Program Manager, National Renewable Energy Laboratory*

IV. Partnerships to Support Local and Community Driven Data

- *Kaimana Bingham, Sustainability Dashboard & Partnerships Manager, Hawai'i Local2030 Hub*

V. Guest Speakers

- *John Marra, Regional Climate Services Director for the Pacific Region, NOAA NESDIS NCEI*
- *Lauren Swaddell, Guam Green Growth Coordinator*

VI. Facilitated Discussion in Breakout Groups

VII. Plenary Session

VIII. Closing & Next Steps



Celeste Connors
CEO
Hawai'i Local2030 Hub

Core Principles of the Local2030 Islands Network



Strengthen long-term political leadership on sustainable development and climate resilience



Scale up public-private partnerships that support diverse stakeholders in integrating sustainability priorities into policy and planning



Measure SDG progress through tracking and reporting on locally and culturally informed indicators



Implement concrete initiatives that build island resilience and circular economy at the water energy-food nexus



Trigg Talley

Senior Director,
Office of the Special Presidential Envoy for Climate



Ron Benioff

International Program Manager
National Renewable Energy Laboratory



What is a Community of Practice?

A Community of Practice (CoP) is an interactive and member-driven network of people who come together to learn and support individual and group goals.

The Local2030 Islands Network and partner organizations are developing CoPs to enable islands to learn from one another with the support of island experts.



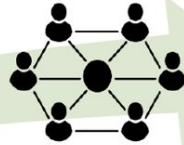
Community of Practice Model



Country Deep Dives



CoP Group Learning



Regional & global
knowledge dissemination

1

Members identify annual priority topics for the CoP aligned with locally developed SDG goals

2

Map stakeholders and initiatives – concept note developed and shared to recruit other members

3

Jointly develop annual work program with goals, activities, planned outputs, and partnerships.



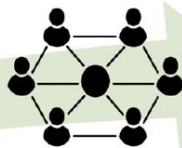
Community of Practice Model



Country Deep Dives



CoP Group Learning



Regional & global
knowledge dissemination

4

Delivery of learning and technical assistance

5

Recruitment of new members and partners

6

Ongoing monitoring on progress and added value –
adjustment of work plan activities as needed



Courtesy of Blue Zones Project

Attributes of Successful Communities of Practice

- **Convene practitioners** with strong shared interest on specific topics
- **Bottom up, demand driven and dynamic** to meet diverse member needs
- **Multi-stakeholder group** for rich and in-depth exchange
- **Couple peer learning and technical support** to early movers with continuous feedback
- **Foster country and regional SDG champions** and regional/global cooperation
- **Safe and apolitical space** for peer learning, exchange of best practices and innovation
- **Enable cross-country collaboration** and resource sharing



Examples of Activities



**Peer learning,
training programs,
and study tours**



**Expert advisory
support to early
movers**



**Cross-country collaboration and
high-ambition coalitions**



**Cooperation on proposals
for expanded regional
projects**



**Hackathons and other innovative
learning mechanisms**



**Matchmaking to financial
institutions and investment
facilities**

Communities of Practice in Action

Case Study Example 1

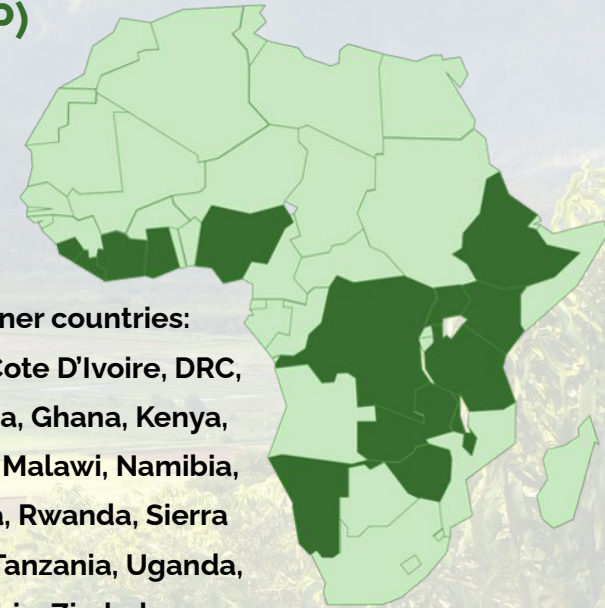
AfLP's Africa Minigrids Community of Practice (AMG CoP)

Brings together practitioners (public, private, academia, etc.) from 18+ member countries to provide training, tools, lesson sharing, peer-exchanges and in-depth technical assistance

2021-22 guiding theme of CoPs: developing long-term visions for low-emission energy-agriculture systems and their application to inform NDC planning and implementation

Trusted network for open and honest peer dialogue and rapid validation and information sharing with peers in other countries. Engaged membership (lively WhatsApp thread) and known partners creates open space to share views, opinions, lessons, successes and failure

All priorities driven by members via annual work planning and bilateral validation discussions



Partner countries:
Benin, Cote D'Ivoire, DRC,
Ethiopia, Ghana, Kenya,
Liberia, Malawi, Namibia,
Nigeria, Rwanda, Sierra
Leone, Tanzania, Uganda,
Zambia, Zimbabwe

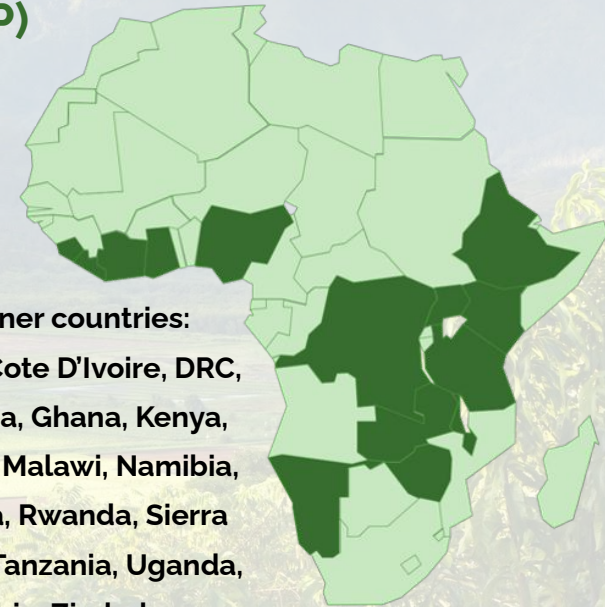
Communities of Practice in Action

Case Study Example 1

AfLP's Africa Minigrids Community of Practice (AMG CoP)

Recent Successful Activities:

- In-depth peer-to-peer exchanges on minigrid development frameworks, e.g. public vs. private-sector led approaches (exchanges including Ghana, Nigeria, Ethiopia)
- Public-private finance dialogue and MG policy and regulatory crash courses for new countries, in partnership with Africa Minigrid Developers Association and others, on attracting private finance to minigrid sector
- Remote workshop series on member-driven priorities including MG finance, MG co-benefits, long-term planning, productive uses of energy (PUE) for minigrids
- Planning to launch spinoff CoP focused on energy-agriculture nexus and links to broader NDC planning and implementation, as identified by priorities as members



Partner countries:
Benin, Cote D'Ivoire, DRC,
Ethiopia, Ghana, Kenya,
Liberia, Malawi, Namibia,
Nigeria, Rwanda, Sierra
Leone, Tanzania, Uganda,
Zambia, Zimbabwe

Communities of Practice in Action

Case Study Example 2

Transport Communities of Practice in LAC and Asia

LAC – Electric Mobility CoP

Partner countries: Uruguay, Colombia, Mexico, Argentina, Peru, Ecuador, Panama, Chile, Honduras, El Salvador, Bolivia

Peer Learning and capacity building "virtual" and in-person e-mobility workshops:

"Integrated Sustainable Mobility for Urban Cities"

- Equity and justice are key aspects to keep in focus in urban electrification projects
- The greatest planning and design complexity lies not in the vehicle technology or the charging infrastructure, but in the communication between the two.

Costa Rica: Curridabat's Local Mobility Transition Plan designed to help the city achieve its sustainable transportation goals that are affordable, safe, efficient, non-polluting and available to all.

Mexico: Framework for Mexicali's Electric Mobility Strategy, including data-driven solutions to inform strategies and regulatory framework for the city's transition to electric vehicles.

Colombia: Guidance for the development of Bogota's electric mobility policy roadmap and guidance for transitioning the city's motor-cycle fleet to electric

Communities of Practice in Action

Case Study Example 2

Transport Communities of Practice in LAC and Asia

ASIA – Clean Mobility CoP and High Ambition Leadership Group

Leadership Group (2021):

Technical leaders from 8 countries have joined this group. To date, three countries have received support for technical challenges and long-term planning to progress towards net-zero transport systems.

Sri Lanka: Developed a framework for a national electric mobility policy

Bhutan: Developed a Pre-Bus Rapid Transit (BRT) system for Thimphu city to help plan the city's public transportation

Kaimana Bingham

Sustainability Dashboard & Partnerships Manager

Hawai'i Local2030 Hub



Hawai'i Green Growth

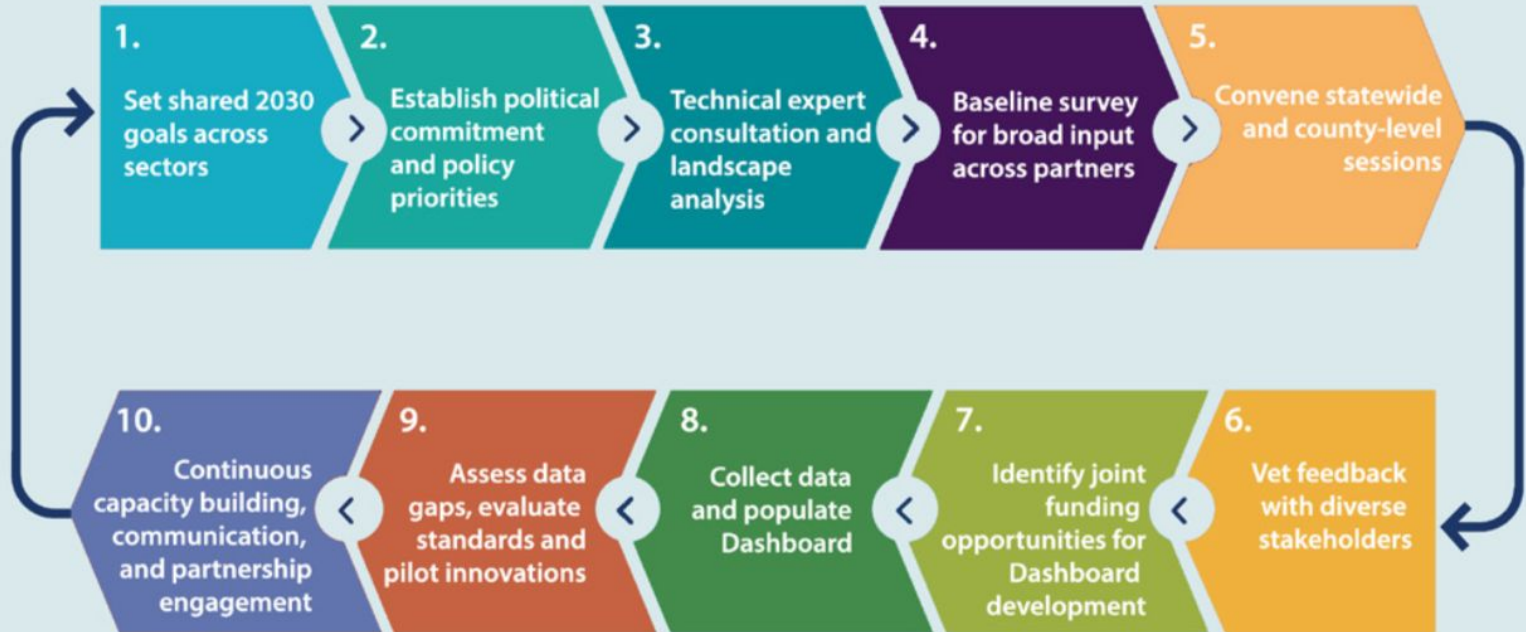
Hawai'i Green Growth (HGG) members and supporters include:



Measure What Matters

Stakeholder-driven development of local metrics and indicators

Short-term consensus building for long-term goals connecting governance, technology and community





CLEAN ENERGY



WASTE REDUCTION



LOCAL FOOD



SMART SUSTAINABLE COMMUNITIES



NATURAL RESOURCE MANAGEMENT



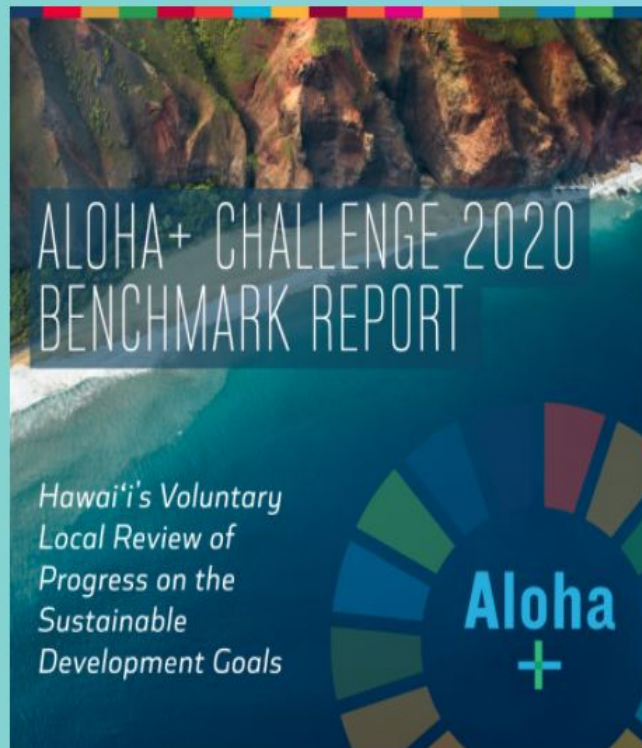
GREEN WORKFORCE & EDUCATION



Aloha+ Challenge 2020 Benchmark Report: Hawai'i's Voluntary Local Review Of Progress on the Sustainable Development Goals

Hawai'i's first statewide Voluntary Local Review assesses progress to date and provides 2020 benchmark data to inform decision-making, including on economic recovery, through the Aloha+ Challenge - Hawai'i's framework to achieve the UN Sustainable Development Goals

[Download Benchmark Report](#)





SDG
DATA
ALLIANCE

THE PARTNERS



PUBLIC
FOUNDATION



W.K.
KELLOGG
FOUNDATION



SDG
DATA
ALLIANCE

DATA LABS



Country Profiles

[View](#)



Hawai'i's SDGs

[View](#)



SDG Template (coming soon)

[View](#)



What is Your SDG Story?

[View](#)

SUPPORT THE SDG DATA ALLIANCE

SDG Data Alliance

Based on the foundational principle of reducing inequalities of all kinds, the W.K. Kellogg Foundation, Esri, PVBLIC Foundation, the United Nations Global Geospatial Information Management Section in the Statistics Division, Department of Economic and Social Affairs (DESA), joined forces in 2021 to form **the SDG Data Alliance**.

Using the power of **purpose-driven collaboration** and leading GIS technology, this influential group of partners **will accelerate achievement of the SDGs** by creating 20 SDG Data Hubs across developing countries in Africa, Asia and the Pacific and Latin America and the Caribbean.



Objectives and Outcomes

- **Leverage and strengthen** the in-country expertise from geospatial experts within and across governmental agencies and organizations leveraging the data hubs
- **Address national and global reporting** requirements to report on the SDGs - with specific focus on SDG 10
- **Accelerate achievement of the SDGs** by accurately identifying areas for focus and investment




The **SDG DATA ALLIANCE** began country-level engagement with an **initial group of 11 countries** and will shortly engage **another 7 countries**

30 candidate countries

Africa	Asia and the Pacific	Latin America and the Caribbean
1. Burkina Faso	16. Fiji	21. Chile
2. Cameroon	17. Indonesia	22. Colombia
3. Comoros	18. Nepal	23. Cuba
4. Congo DRC	19. Philippines	24. Dominican Republic
5. Eswatini	20. Tonga	25. Ecuador
6. Ethiopia		26. El Salvador
7. Kenya		27. Guatemala
8. Madagascar		28. Honduras
9. Morocco		29. Panama
10. Mozambique		30. Saint Lucia
11. Niger		
12. Rwanda		
13. Senegal		
14. South Africa		
15. Tunisia		

Initial Group of 11 Countries



Burkina Faso
Cameroon
Chile
Eswatini
Ethiopia
Mozambique
Rwanda
Senegal
South Africa
Tonga
Tunisia

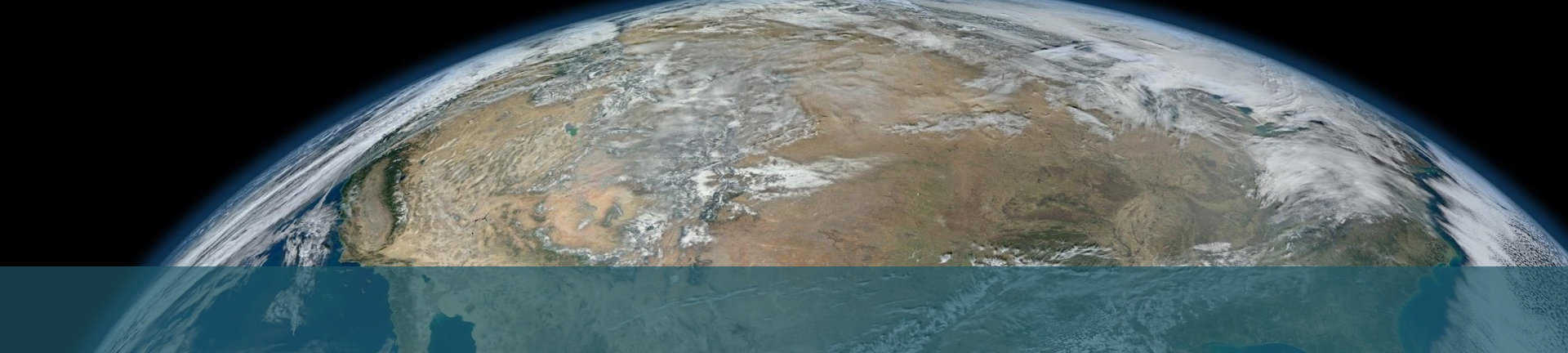


- SDG Data Alliance Candidate Island Nations (8)
 - Integrated Geospatial Information Framework implementation plan
 - SDG Data Hub – federated with UN Open SDG Data Hub and Local2030 Islands Network SDG Data Hub
- Island Nations that are IDA Countries (21)
 - SDG Data Hub Site within a Local2030 Islands Network SDG Data Hub
- Resources from Esri
 - SDG Grant for IDA countries
 - GIS Curriculum for SDGs
 - SDG Data Hub Template – which can incorporate dashboards & open data
 - ArcGIS Living Atlas content (imagery, landcover, world population, etc.)



John Marra

Regional Climate Services Director for
the Pacific Region
NOAA NESDIS NCEI



Island Experiences with Data and Dashboards to Support Resilience

Data for Climate Resilience Community of Practice Kickoff and Initial Scoping Event

27 January 2022
Virtual

John J. Marra, Ph.D.
NOAA NESDIS NCEI



The Product



DASHBOARDS are a tool to aggregate and integrate content as a means to support situational awareness and guide decision-making (e.g., monitor progress, give warnings).

The Products

Vanuatu Coral Reef and Coastal Fisheries Outlook Dashboard

(Volume 1) Vanuatu Coral Reef and Coastal Fisheries Outlook Dashboard The goal of this website is to provide seasonal forecasts of coral reef and coastal fisheries in Vanuatu and to provide information on the status of the sector in response to the current and forecasted conditions.

Vanuatu's coral reefs and coastal fisheries are highly sensitive to climate variability and change. This site provides seasonal forecasts of coral reef and coastal fisheries in Vanuatu and to provide information on the status of the sector in response to the current and forecasted conditions.

Region: Vanuatu

Forecast Period: 2016-2017

Forecast Summary

Sea Surface Temperature

The forecast for sea surface temperature (SST) in Vanuatu is for a large warm anomaly in the southern and central regions of the country, with a large warm anomaly in the southern and central regions of the country, with a large warm anomaly in the southern and central regions of the country.

Sea Level Pressure

The forecast for sea level pressure (SLP) in Vanuatu is for a large warm anomaly in the southern and central regions of the country, with a large warm anomaly in the southern and central regions of the country.

Cloud Cover

The forecast for cloud cover in Vanuatu is for a large warm anomaly in the southern and central regions of the country, with a large warm anomaly in the southern and central regions of the country.

Sea Level

The forecast for sea level in Vanuatu is for a large warm anomaly in the southern and central regions of the country, with a large warm anomaly in the southern and central regions of the country.

Wind Speed

The forecast for wind speed in Vanuatu is for a large warm anomaly in the southern and central regions of the country, with a large warm anomaly in the southern and central regions of the country.

Sea Level Anomaly

The forecast for sea level anomaly in Vanuatu is for a large warm anomaly in the southern and central regions of the country, with a large warm anomaly in the southern and central regions of the country.

Sea Level Rise

The forecast for sea level rise in Vanuatu is for a large warm anomaly in the southern and central regions of the country, with a large warm anomaly in the southern and central regions of the country.

Sea Level Fall

The forecast for sea level fall in Vanuatu is for a large warm anomaly in the southern and central regions of the country, with a large warm anomaly in the southern and central regions of the country.

Sea Level Rise

The forecast for sea level rise in Vanuatu is for a large warm anomaly in the southern and central regions of the country, with a large warm anomaly in the southern and central regions of the country.

Sea Level Fall

The forecast for sea level fall in Vanuatu is for a large warm anomaly in the southern and central regions of the country, with a large warm anomaly in the southern and central regions of the country.

Marshall Islands Climate Outlook

The weekly product provides a brief range of information needed to assess climate variability in the Republic of the Marshall Islands. It includes a snapshot of current and future conditions for a range of climate indicators. Used alongside more detailed outlook-based information from reports and updates, and primary the place the information in a national context. It also includes links to additional sources of information.

Forecast Period: 2016-2017

Forecast Summary

Sea Surface Temperature

The forecast for sea surface temperature (SST) in the Marshall Islands is for a large warm anomaly in the southern and central regions of the country, with a large warm anomaly in the southern and central regions of the country.

Sea Level Pressure

The forecast for sea level pressure (SLP) in the Marshall Islands is for a large warm anomaly in the southern and central regions of the country, with a large warm anomaly in the southern and central regions of the country.

Cloud Cover

The forecast for cloud cover in the Marshall Islands is for a large warm anomaly in the southern and central regions of the country, with a large warm anomaly in the southern and central regions of the country.

Sea Level

The forecast for sea level in the Marshall Islands is for a large warm anomaly in the southern and central regions of the country, with a large warm anomaly in the southern and central regions of the country.

Wind Speed

The forecast for wind speed in the Marshall Islands is for a large warm anomaly in the southern and central regions of the country, with a large warm anomaly in the southern and central regions of the country.

Sea Level Anomaly

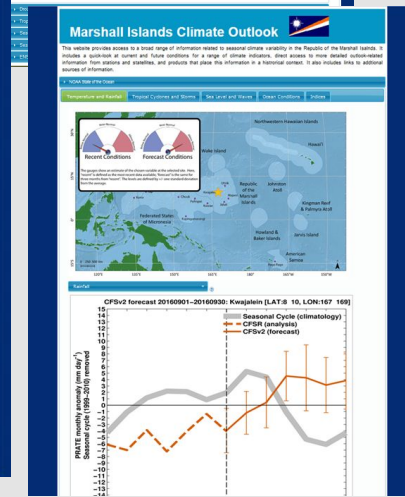
The forecast for sea level anomaly in the Marshall Islands is for a large warm anomaly in the southern and central regions of the country, with a large warm anomaly in the southern and central regions of the country.

Sea Level Rise

The forecast for sea level rise in the Marshall Islands is for a large warm anomaly in the southern and central regions of the country, with a large warm anomaly in the southern and central regions of the country.

Sea Level Fall

The forecast for sea level fall in the Marshall Islands is for a large warm anomaly in the southern and central regions of the country, with a large warm anomaly in the southern and central regions of the country.



Vanuatu Synoptic Stations

Click on circles for info

ENSO Summary test

Rainfall Summary test

Temperature Summary test

Sea Level Summary test

Agroforestry in the Climate of the Marshall Islands

Home | El Niño/La Niña Pattern | Calendar (Normal) | Calendar (El Niño) | El Niño Recommendations | Long term Recommendations | Coastal Forest

This quarter (updated monthly)

Rainfall

September 2016: Normal
December 2016: Normal

Wind speed

September 2016: Normal
December 2016: Normal

Sea level (not including waves or tides)

September 2016: Normal
December 2016: Normal

This year (updated monthly)

(ENSO Alert System not active)

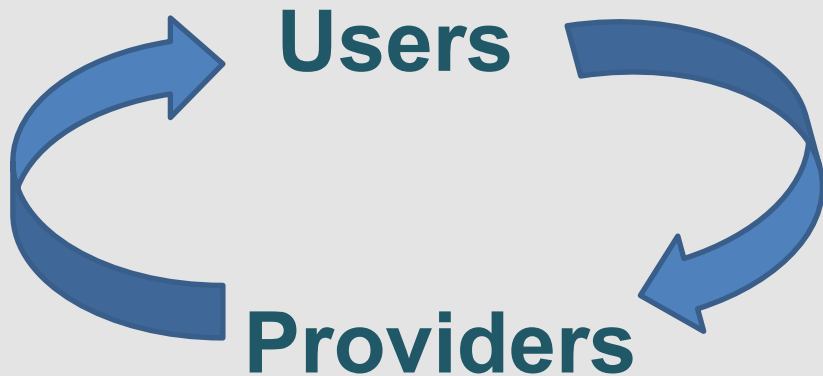
current (advisory)

- What is the El Niño/La Niña pattern?
- Learn about the Marshallese traditional agroforestry calendar.

For more detail on the above information see the Marshall Islands Climate Outlook and the Pacific ENSO Applications Center (PEAC) bulletins.



The Process



- Begin with user needs, not scientific research priorities, developed collaboratively;
- Emphasize processes over products;
- Incorporate systems that link users and producers of information;
- Build connections across disciplines and organizations;
- Seek stability, to build the trust and familiarity needed for effective links and connections among users and producers; and
- Incorporate learning.

COMMUNITY OF PRACTICE as a means to support the
co-production of knowledge.

The Content

“STRESSORS”
(exposure and
sensitivity)

Drought, Fire,
Flooding...

Storms, Flooding,
Erosion...

Bleaching,
Acidification...



“RELAXANTS”
(adaptive
capacity)

Diverse Economy...

Robust Infrastructure...

Good Governance...

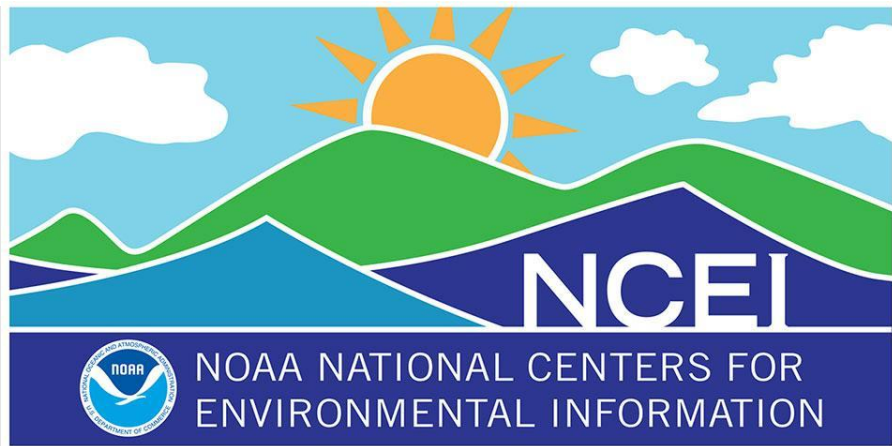
CLIMATE RESILIENCE across Priority Sectors –

Health, Food Security/Agriculture, Fisheries/Aquaculture, Water, Energy, DRM/Infrastructure

Challenges and Opportunities

- **Assessment of socioeconomic risk (including loss estimates) and community vulnerability to:**
 - Critical infrastructure**
 - Food**
 - Freshwater**
 - Cultural and historical sites****...from SLR among other climate stressors.**
- **Identification of adaptation measures, “climate-proofing” strategies and analyses for:**
 - Saltwater intrusion and food security**
 - Renewable energy**
- **Centralized expertise to coordinate assessment and adaptation efforts and policies**
- **Effective sharing of information across sectors and with the public**
- **Quality controls and expanded coverage in climate data records**
- **K-12 educational resources**

...NEEDS from Pacific RISA 2020-21 PIRCA reports covering Guam, CNMI, Palau, RMI, FSM and American Samoa, involving over 100 authors and technical contributors



John J. Marra, Ph.D.
Regional Climate Services Director,
Pacific Region

john.marra@noaa.gov
www.ncei.noaa.gov
www.climate.gov



NCEI Climate Facebook: <http://www.facebook.com/NOAANCElclimate>

NCEI Ocean & Geophysics Facebook: <http://www.facebook.com/NOAANCEloceangeo>

NCEI Climate Twitter (@NOAANCElclimate): <http://www.twitter.com/NOAANCElclimate>

NCEI Ocean & Geophysics Twitter (@NOAANCElocgeo): <http://www.twitter.com/NOAANCElocgeo>



Lauren Swaddell
Guam Green Growth Coordinator



Interactive Sessions: Thematic Areas for Community of Practice

Guiding Objectives:

- Identify **2-3 priority focus topics** for the Data for Climate Resilience Community of Practice
- Insight on **challenges, barriers, and opportunities** that can inform Community of Practice action

Format: One 60-minute breakout session followed by a Closing Plenary



Jamboard Tips

Create

View a dashboard of all your Jamboards @ jamboard.google.com

Edit

Use the Undo feature when drawing to quick erase mistakes

Use the cut/paste to bring objects quickly to the front layer

Paste images directly onto the Jamboard

Use the Copy/Paste to duplicate objects on the frame

Share

Share a copy of your Jamboard. At the end of the URL, change it from "Edit" to "Copy"



Closing Plenary

Key takeaways from the breakout sessions and Community of Practice next steps.



**Data for Climate Resilience
Community of Practice**



Thank you!

**For more information visit
www.islands2030.org or
contact info@islands2030.org**



January 27th, 2022